

ALWAYS  
FREE

# *The Antiques*

★ **TOURIST** ★

DORSET | DEVON | WILTSHIRE | SOMERSET

# 2025 EDITION

**YOUR ESSENTIAL  
GUIDE TO:**

**ANTIQUES  
VINTAGE  
RETRO  
RECLAMATION**



**The Antiques Tourist is promoted by Antiques Bazaar**  
THE OLD TEXTILE MILL | SOUTH STREET | CREWKERNE | TA18 8AG  
**Telephone: 01460 77121**

**WWW.THEANTIQUESTOURIST.COM**

## ANTIQUE SHOPPING ON AN EPIC SCALE...

- 10,000+ unique items for the home & garden
- Home Furnishings, Gifts, Antiques, Vintage, Plants
- Over 65 different antique and vintage dealers
- Large coffee shop with indoor and outdoor seating
- Mon-Sat 10am - 4pm between Pinhoe & Cullompton



The Antique Village

[www.TheAntiqueVillage.co.uk](http://www.TheAntiqueVillage.co.uk)

Antiques & Vintage

Unique Gifts

Home & Garden

Coffee

COME  
AND  
VISIT

THE ANTIQUE VILLAGE  
AS SEEN ON T.V. ...



BBC  
BARGAIN  
HUNT



ANTIQUES  
ROAD TRIP



MONEY FOR  
NOTHING



SALVAGE  
HUNTERS



"Superb. I'd now put this  
in my top five antique  
centres in the country,  
superb!"

Drew Pritchard,  
Salvage Hunters

MONDAY - SATURDAY 10AM - 4PM  
THE ANTIQUE VILLAGE, HELE, DEVON, EX5 4PW

Thatched bus stop in Litton Cheney.

# TIME FOR A TRIP AROUND THE COUNTY OF DORSET

## **DORSET - A COUNTY OF VERY VARIED COUNTRYSIDE, RENOWNED FOR THOMAS HARDY AND THE JURASSIC COAST!**

We start our **antiques road-trip** inland in Mere (just off A303) at **Walton House Antiques** - an elegant antiques shop in The Square. From here take the B3092 to Gillingham and **Sandys Furniture Warehouse** in Station Road. Continue to Shaftesbury, first turning north on A350 for a couple of miles to Semley, where you will find **Kingsettle Antiques** and **Station Road Antiques**. Retrace your steps to Shaftesbury. In the town centre are **Bell Street Antiques**, **Dairy House Vintage and Home**, and **Shaftesbury Antiques Centre**, all close together, along with a choice of coffee-stops!

Now the adventure begins as we continue our **antiques road-trip** south to Blandford! The choice is yours; take the A350 through Fontmell Magna and Iwerne Minster, or the B3081 via Melbury Abbas. They both meet on the roundabout at Blandford Heights. For the views I usually select Melbury Abbas. This starts as an ancient "holloway" with

single file traffic through Dinah's Hollow, then rises dramatically to spectacular views at Compton Abbass Airfield, before meandering through parts of Cranborne Chase onward to Blandford. Either route is circa 13 miles, and takes 25 minutes.

Whichever route you choose, at Blandford Heights head along Shaftesbury Lane, and find **The Old Grainstore Emporium** on the right. Return to A350 and head south to Poole. Follow the A3049 through Parkstone to **The Den** at Francis Avenue. This is quite a large warehouse with an onsite café. Next you must navigate through Bournemouth to Pokesdown, a very traditional area for antiques. Heading east along Christchurch Road you will find in the following order -; **Pokesdown Vintage House**, **Pokesdown Antiques Centre** and **Vintage Mirrors and Lighting**. Continue eastwards to Christchurch, and **The Christchurch Emporium**. Here too is an onsite café.

Then travel north to West Parley for **Room 1553**, situated in Basket & Blooms Garden Centre.

It is now time to head west to Bere Regis, and **Dorset Reclamation**, situated on the A31/ A35 roundabout junction. Then a short journey

into Dorchester and the **Dorchester Curiosity Centre** at Grove Trading Estate. This is a large warehouse, with its own café.

Next a trip to The Jurassic Coast at Weymouth. You will find **Cornucopia** situated in St Mary Street, Weymouth. This gives you a real opportunity to enjoy the atmosphere of this Georgian seaside town.

If you are now heading for Bridport, I really recommend the coastal route through Portesham, Abbotsbury and Burton Bradstock. You will not be disappointed with the stunning views of this part of The Jurassic Coast! It is worth considering the right days to visit Bridport. Wednesday and Saturday are **Street Market** days, and on the last Sunday from March to October is the **Vintage Market** at St Michaels. However, there is much more to Bridport! **The Alleyways Centre, Pebble Vintage** and **Global Arts & Antiques** are also on St Michaels, and are open up to 7 days a week! **Global Arts** also have a gallery in West Street, opposite Waitrose.

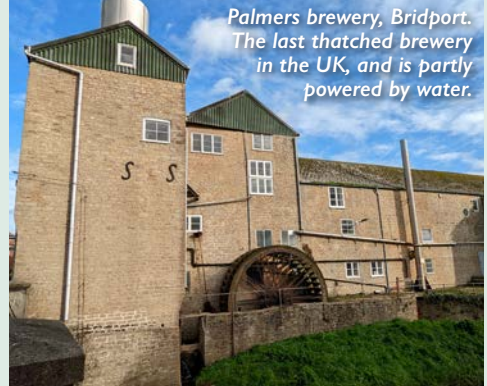
A trip to Bridport would not be complete without visiting West Bay and **The Customs House** in an historic shore-side warehouse.

Now another bit of "cross country" for the next leg of our **antiques road-trip!** Take A35 east to Loders Cross, then turn left to Spyway and Eggardon - true Hardy Country! (You may choose to detour onto Eggardon Hillfort to take in the full Hardy experience). Next stop Wynford Eagle and then Maiden Newton. From The Square take Station Road and Norden Lane up to A37. Turn left and **Wardon Hill Trading Post** is soon found on the righthand side. Complete with plant centre and café. *This part of the "cross-country route" is 14.2 miles and will take just 30 minutes without stops.*

*Our final town is Sherborne, a mere 12.7 miles and 23 minutes away. The route is quite simple. North on A37, right to Yetminster and on to Thornford. Entering Sherborne from the south, The Old Yarn Mills are immediately on your left, where you will find; **Molecula; Reynolds Interiors; Holby & Co; and Mary Hassock Antiques.** They all have varying trading hours, so please check their respective details carefully.*

Did we leave the best 'til last? **Sherborne Antiques Market** is situated at the bottom of Cheap Street. A good, traditional centre with a mix of antiques and vintage, open 7 days a week; and all the usual town centre amenities nearby.

*Editorial note: This "road-trip" is just one interpretation of how all the advertisers featured here in the Dorset section of The Antiques Tourist could be visited in one continuous journey. Please check trading hours, and make allowance for overnight stays, traffic conditions, the suitability of your vehicle and the availability of fuel and EV charging stations. Please read the full information about each business, and research the routes that we have suggested. Country roads can be challenging, and further compromised by bad weather, poor visibility, seasonal traffic, and damaged road surfaces. The Antiques Tourist do not accept liability for any losses or damage incurred whilst following our suggested route.*



*Palmers brewery, Bridport. The last thatched brewery in the UK, and is partly powered by water.*

Welcome to The Antiques Tourist for 2025. We hope you enjoy exploring all the businesses featured in here, across the counties of Dorset, Devon, Wiltshire and Somerset. To our advertisers, thank you again this year for booking your space in our very popular guide.

Disclaimer: Whilst every effort has been made to ensure accuracy, we do not accept responsibility for any losses or damage whatsoever resulting from information contained in The Antiques Tourist.

Copyright: No part of the publication may be copied or reproduced without prior written consent of the Editor. Please send in any feedback, as it may be useful for future editions.

*Anthony Bucke*. EDITOR. Friday 7 February 2025. Email: [hello@theantiquetourist.com](mailto:hello@theantiquetourist.com)



# WALTON HOUSE ANTIQUES LTD

Open Monday to Saturday 9.30/5.30 inclusive

Walton House Antiques offers the discerning buyer an extensive range of fine quality antique furniture, French clocks and works of art, from our spacious 3,500 sq foot showroom in the centre of Mere, Wiltshire, just off the busy A303, with ample free parking.

[www.waltonhouseantiques.co.uk](http://www.waltonhouseantiques.co.uk) [info@waltonhouseantiques.co.uk](mailto:info@waltonhouseantiques.co.uk)

Call us on: **01747 860050**  
or Nick **07900 430658** or Paul **07816 216645**

**The Walton Building, The Square, Mere, BA12 6DL**

# Sandy's Furniture

## WAREHOUSE

### ...and Antiques & Collectables Emporium

Currently in stock, we have model rail engines, carriages, vintage buses, Eddie Stobart lorries, Dinky Toys, moon lamps, model soldiers, and toy tractors  
- perfect for collectors and enthusiasts.

Our **large furniture range** includes dining tables, chairs, wardrobes, chest of drawers, bookcases, sofas, and desks. **There's a mix of antique and modern styles to suit every space.**

For something unique, discover grandfather clocks, vintage metal signs, costume jewellery, spinning wheels, and complete collections.  
**There's always something special to find!**



**Open 9am-5pm  
Monday to Saturday**



**New stock arriving daily, great for traders and customers alike**  
Visit our Furniture Warehouse website [www.sandysfurniture.co.uk](http://www.sandysfurniture.co.uk)

**Somdor House, Lower Station Road, Gillingham Dorset SP8 4QA**  
Tel: 01747 822077 • Email: [sandysremovals@aol.com](mailto:sandysremovals@aol.com)

*Moving House? Don't forget Sandys Removals (Est. 1970) "Still The Best In The West"*



**SANDYS REMOVALS AND  
CONTAINERISED STORAGE**

[www.sandysremovalsandstorage.com](http://www.sandysremovalsandstorage.com) **01747 822077**



# Kingsettle Antiques

TELEPHONE: 01747 850467  
EMAIL: KINGSETTLEANTIQUES@GMAIL.COM

WWW.KINGSETTLEANTIQUES.CO.UK  
STATION ROAD, SEMLEY, SHAFTESBURY, SP7 9AH

*Large Antiques Centre Selling a Huge Amount of Varied & Interesting Items*

OPEN MONDAY TO SATURDAY 10AM - 5PM, SUNDAY 11AM - 4PM OPEN BANK HOLIDAYS 11AM - 4PM

*All Antiques, Gold, Silver & Chattels Wanted - House Clearances Undertaken*

## Grandma's Attic Antiques & Collectors Fairs

Quality fairs across  
Dorset, Hampshire, Surrey & West Sussex  
Bournemouth, Chichester, Eastleigh, Midhurst, Wimborne, Woking

For all fair dates, opening times &  
venue information please check our website

01202 779564 or 07960 502508  
info@grandmasatticfairs.co.uk

[www.grandmasatticfairs.co.uk](http://www.grandmasatticfairs.co.uk)

# STATION ROAD ANTIQUES

Tel. 01747 228008



## OVER 30 DEALERS ON 2 LEVELS

Open 7 days a week Mon-Sat 10am-5pm Sun 10am-4pm

 @stationroadantiques

info@stationroadantiques.co.uk

www.stationroadantiques.co.uk

**Station Road, Semley, Shaftesbury, SP7 9AN**



No.1

BELL STREET  
ANTIQUES

[www.bellstreetantiques.com](http://www.bellstreetantiques.com)

1 Bell Street, Shaftesbury, Dorset, SP7 8AR

# SHAFTESBURY ANTIQUES

ANTIQUES, HOUSE CONTENTS, COLLECTABLES, BOUGHT AND SOLD



TELEPHONE 01747 850171 07739 069607

[info@shaftesburyantiques.com](mailto:info@shaftesburyantiques.com)

28 HIGH STREET, SHAFTESBURY, DORSET, SP7 8JG

# DAIRY HOUSE

— VINTAGE & HOME —

## **Dairy House Antiques is now in Shaftesbury!**

You can find us on the High Street opposite Reeves. We have a fantastic array of vintage, antique and rustic furniture, silver plate and jewellery, gardenalia, books, decorative items, fabrics, textiles and more. Come and visit us for a wonderfully inspirational trip.

13 High Street  
Shaftesbury, SP7 8JS

01747853317  
dairyhouseantiques.com  
shop@dairyhouseantiques.com  
@dairyhouseantiques

Open 10-5 Monday-Saturday  
11-4 Sunday & Bank Holidays





# THE · DEN

ANTIQUES · VINTAGE · RETRO

COME AND VISIT OUR  
EXTRAORDINARY EMPORIUM ON  
THE BEAUTIFUL SOUTH COAST  
FIND US HERE - BH11 8NX

WE ARE FULL TO THE BRIM OF INTERESTING & WONDROUS FINDS.  
HOUSING MORE THAN 100 INDIVIDUAL TRADERS.  
PLUS **THE KITCHEN** DELICIOUS HOME COOKED FOOD & DRINK.

TEL 01202 573190 [THEDENEMPORIUM@OUTLOOK.COM](mailto:THEDENEMPORIUM@OUTLOOK.COM)



# Selling Nostalgia

at The Old Grainstore Emporium, Blandford

- Vintage
- Antiques
- Retro
- Upcycled
- Artisan
- Tearoom



the old  
**GRAINSTORE**  
emporium

07745 477795

Find us on

Unit M2-4, The Grainstore, Shaftesbury Lane, Blandford, DT11 7EG

E: theoldgrainstoreemporium@outlook.com

Open Tue-Sat 10am-5pm • 1st Sunday of the Month 10am-4pm

## POKESDOWN ANTIQUE CENTRE



*Pokesdown Antique Centre has been trading for over 30 years. We buy and sell, Decorative Lighting, all types of Glassware, Paintings and Mirrors, Jewellery and Watches.*

OPENING HOURS  
Mon - Sat 10am to 5.30pm | Closed on Sunday

848 Christchurch Road,  
Pokesdown, Bournemouth BH76DQ  
Telephone: 01202 433263

POKESDOWN

# VINTAGE HOUSE

## RETRO HOMEWARES

813 CHRISTCHURCH ROAD, POKESDOWN  
BOURNEMOUTH, BH7-6AP

EMAIL: HELLO@VINTAGEHOUSE813.COM

MOBILE: 07707 338988

# VINTAGEHOUSE813.COM

# VINTAGE MIRRORS & LIGHTING

We have the largest selection of antique/vintage mirrors and lighting in the south west.

So if you are looking for something unique we have over 100 examples of individual mirrors and period table lamps on display, also interior items of all types to furnish your home.

We also buy items, so call us for opening hours on 07712 346756 or 07792 376911

858 Christchurch Road, Bournemouth BH7 6DQ  
(150 yards from Pokesdown Railway Station)  
email kingfisherken858@yahoo.com



ROOM  
1553

VINTAGE EMPORIUM WITH OVER  
25 TRADERS TO BROWSE

## OPEN NOW


### Opening Hours

Monday – Saturday: 10 am - 4:30 pm  
Sunday: 10 am - 4 pm

### FIND US AT:

Room 1553 (Basket and Blooms Garden Centre)  
392 Christchurch Road, West Parley,  
Ferndown, BH22 8SW

Email us: room1553vintage@gmail.com

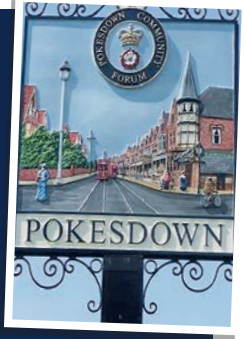
 Follow us on Facebook

**Bournemouth** is a seaside resort with beautiful beaches which are 7 miles long, stretching into Poole Harbour and Brownsea Island. In 2024 the beach was recognised as one of the safest in the UK.

To the east of Bournemouth Town Centre is the area of **Pokesdown**, in **Christchurch Road**.

Pokesdown has been famous for years as a centre for shops selling antiques, vintage and collectables. These shops are concentrated in an area quite near to Pokesdown Railway Station, and in the streets around this area there is abundant parking, and numerous cafes, coffee bars, restaurants and pubs.

A regular bus service runs between Lyminster, Christchurch, Bournemouth, Poole, Dorchester and Weymouth. So road, rail and bus connections make Pokesdown an attractive option for a day out!



VINTAGE

GARDEN & OUTDOORS

FASHION & JEWELLERY

CAFE & GROUP HUB  
BREAKFAST  
LUNCH - CAKES  
DRINKS  
FREE PARKING

VINYL & PHOTOGRAPHY

RETRO

TOYS & COLLECTABLES

MOLLY'S DEN

CHRISTCHURCH EMPORIUM

AVON WORKS, BRIDGE ST, CHRISTCHURCH, DORSET BH23 1DY 01202 476773

GIFTS & SEASONAL IDEAS

MODERN

KNITTING & SEWING

OPEN

TUES-SAT: 10-5

SUN: 11-4

BANK HOLIDAYS: 11-4

NEW TRADERS WELCOME

ANTIQUE

ARTS & CRAFTS

FURNITURE & HOMEWARES



Dorset Reclamation Ltd

High Quality Reclaimed Traditional Building Materials and Architectural Antiques

Old Flagstones,  
Aga Cookers,  
Terracotta Floors,  
Pine, Oak and Elm  
Floorboards, Oak  
Beams and Pine  
Doors, Period  
Bathrooms,  
Fireplaces and  
Architectural,  
Garden Antiques  
and Reclaimed  
Handmade Bricks



Cow Drove, Bere Regis, Dorset BH20 7JZ

Tel: 01929 472200

Email: info@dorsetreclamation.co.uk

www.dorsetreclamation.co.uk

DELIVERY ARRANGED

The Aga Exchange



Tel: 01929 472200

Reconditioned Aga Cookers and  
Re-enamelling Service Electric  
Conversions

www.theagaexchange.co.uk

# DORCHESTER CURIOSITY CENTRE



FURNITURE  
VINTAGE CLOTHING  
COLLECTABLES

ANTIQUES  
RECORDS  
TEXTILES

*"The perfect place to find a unique gift  
or that one-off piece of furniture."*

With over 70 traders across 12,000 sqft there's something for everybody and at the heart of the centre is the Curiosity Café offering a delicious menu of tasty delights.



Enjoy free Wi-Fi and ample parking as you browse through beautiful antiques, retro items, quality crafted shabby chic, glassware, ceramics and thousands of curios and collectables.

We also buy items and offer a delivery service across Dorset.

**Open 7 days a week  
Monday to Saturday 9am-5pm  
Sundays and Bank Holidays 10am-4pm**

**The Old Bus Depot  
Grove Trading Estate, Dorchester  
Dorset DT1 1ST**

☎ 01305 251886

✉ [dorchcuriocentre@live.co.uk](mailto:dorchcuriocentre@live.co.uk)

🌐 [www.dorchestercuriositycentre.co.uk](http://www.dorchestercuriositycentre.co.uk)

📘 [facebook@DorchesterCurioCentre](https://www.facebook.com/DorchesterCurioCentre)

📷 [Instagram@dorchcuriocentre](https://www.instagram.com/dorchcuriocentre)

# The Alleyways Centre

For the best of antiques, vintage, collectables, kitchenalia and much more all under one roof.



With over 50 traders in the Art & Vintage Quarter, St Michaels Trading Estate, Bridport, Dorset DT6 3RR



## Open 7 days from 10:00am



Telephone 01308 425111

Email: [thealleywayscentre@gmail.com](mailto:thealleywayscentre@gmail.com)



## BRIDPORT'S HISTORIC STREET MARKET

**Every Wednesday and Saturday is market day in the vibrant town of Bridport**

**Bridport**



**your local market**

With an amazing selection and variety of stalls along the three main streets to browse and delicious food to enjoy there are so many reasons to visit...



Further information call **01308 424901** or visit [www.bridportandwestbay.co.uk](http://www.bridportandwestbay.co.uk)





  
**pebble**  
 mid century  
 furniture  
 textiles  
 accessories

---

WED to SAT:  
 10am - 4pm

[pebblevintage.com](http://pebblevintage.com)  
 07713 859 560

Unit 136, St Michaels  
 Trading Estate,  
 Bridport, Dorset,  
 DT6 3RR.

# BRIDPORT VINTAGE MARKET

VINTAGE, ANTIQUES, FOOD, DRINK, MUSIC



## 2025 MARKET DATES

30<sup>th</sup> March | 27<sup>th</sup> April | 25<sup>th</sup> May  
 29<sup>th</sup> June | 27<sup>th</sup> July | 31<sup>st</sup> August  
 28<sup>th</sup> September | 26<sup>th</sup> October  
 December tbc

**ST MICHAEL'S TRADING ESTATE DT6 3RR**

THE  
**CUSTOMS HOUSE**  
EMPORIUM

VINTAGE • ANTIQUE • RETRO • CRAFTS • SOUVENIRS

VISIT US FOR A GREAT FAMILY DAY OUT ON  
THE JURASSIC COAST

OVER 100 TRADERS • OPEN 7 DAYS A WEEK  
NEW TRADERS WELCOME

[msjodypeach@hotmail.com](mailto:msjodypeach@hotmail.com) • 01308 422222  
 Space from £60 per month





FREE  
ENTRY

WEST BAY • DORSET

FREE  
ENTRY

ANTIQUES, CRAFTS & COLLECTABLES

# CORNUCOPIA





30 Traders In One Location

Open: Mon - Sat 10am - 3pm

65 St Mary Street, Weymouth, Dorset, DT4 8PP

Telephone Caroline 07711 791579

Finesse Wedding Dress Boutique

## DISCOVER THE ARTISTIC TREASURES OF BILLY MUMFORD GALLERY



### BRIDPORT'S PREMIER ART DESTINATION

In the heart of Bridport in the Old Court Building, and right opposite the Waitrose supermarket, lies a hidden gem for art lovers and collectors alike - **the largest collection of Billy Mumford art in the world!**

**A HUB OF ICONIC ART.** Billy Mumford, with his bold, vibrant works that have captivated audiences globally, continues to be one of the most sought-after names in contemporary art. His pieces, celebrated for their raw emotion and vivid storytelling, attract a wide array of collectors, from celebrities and aristocrats to art investors keen to secure a masterpiece that is poised to rise in value.

**BUT THAT'S NOT ALL!** The gallery also proudly features works by the enigmatic Warren Madill, the mercurial artist who was once the toast of the advertising world for decades. His pioneering creativity shaped some of the most memorable

visual campaigns, and now his works offer a rare and sophisticated addition to the gallery's collection. Whether you're an established collector or a first-time visitor, the gallery promises a journey through the exceptional artistry of these two legendary figures.

**A BEACON FOR INVESTORS.** Billy Mumford's reputation continues to soar with TV appearances, radio shows, public and private talks and as a character in Phoebe Waller-Bridge's latest tomb raider series. A MAJOR film announcement is pending with one of the most iconic 'A' listers playing Billy himself, NOW is the time to invest in his work. With a growing list of high-profile individuals eager to acquire Mumford's art, there's never been a better time to visit Bridport's finest gallery. As demand for Mumford's works intensifies, those who invest today stand to see substantial returns in the future.



### GLOBAL ART & ANTIQUES

for more information call us on: 07894 555107

Find us at The Old Court Building (opposite Waitrose entrance)

and Unit 60, St Michaels Trading Estate (opposite Waitrose car park)

# WARDON HILL TRADING POST

A37 DORCHESTER - YEOVIL DT2 9PW

**Tel: 01935 83069**

ANTIQUES, VINTAGE, COLLECTABLES,  
CRAFT & SO MUCH MORE...

OVER 80 TRADERS, THE CABIN CAFÉ  
& GARDEN CENTRE



OPEN 7 DAYS A WEEK

WHEELCHAIR ACCESSIBLE & DOG FRIENDLY

SPACE AVAILABLE TO RENT

# THE OLD YARN MILLS

SHERBORNE • DORSET • DT9 3RQ



UNIT 10+11  
**Molecula**

Mon- Fri  
10am - 5pm



**Modern Design & Antiques**  
molecula.co.uk • 0781000097



UNIT 12  
**Reynolds  
Interiors**

Thurs-Sat  
10am - 5pm



**Midcentury Modern**  
@reynolds\_interiors • 07766414858

**Saturday by appointment  
Ample Free Parking**



**UNIT 13  
Mary  
Hossack  
Antiques**

By  
appointment



**Decorative Antiques & Brocante**  
[maryhossack.co.uk](http://maryhossack.co.uk) • 07884310950



**UNIT 17  
Holtby & Co**

Mon - Fri  
10am - 5pm



**Antiques & Decorative**  
[holtbyandco.uk](http://holtbyandco.uk) • 07877240015

# Sherborne Antiques Market



*42 dealers on one level*

Open 7 days a week, 10am to 5pm, Sunday 11am to 4pm

**Tel: 01935 713760**

[instagram@sherborneantiquesmarket](mailto:instagram@sherborneantiquesmarket)

**71 Cheap Street, Sherborne, Dorset DT9 3BA**

# DEVON



Sidmouth Beach, Devon

## Kingsbridge Antiques Centre

FRIENDLY & INTERESTING  
18 DEALERS in 5 ROOMS

*Two minutes walk from the Quay  
Next to the King of Prussia Pub*



**01548 857155**

Church Street, Kingsbridge TQ7 1DE  
[www.kingsbridgeantiques.co.uk](http://www.kingsbridgeantiques.co.uk)

 @kingsbridgeantiquescentre

 @KingsbridgeAntiques

## M & H Antiques & Art



Our Industrial Unit is open to the public

**Friday & Saturday**

**10am - 4pm**

or by appointment

Unit 8 Torr Trade Park

Torr Quarry, Kingsbridge TQ9 7FA

Opposite Kingsbridge Recycling Center

**07817469226 & 07368558604**

[www.mandhantiques.co.uk](http://www.mandhantiques.co.uk)

Follow us on instagram

[info@mandhantiques.co.uk](mailto:info@mandhantiques.co.uk)

# Murch's

ANTIQUÉ EMPORIUM

An extensive Antiques  
Warehouse of Bric-a-brac,  
Collectables & Furniture

Open to all in a lovely  
riverside setting

The Bridge, Umberleigh, EX37 9AA

TELEPHONE: 01769 560522



Atlas offers a fresh and unique approach  
to interiors, bringing inspired design to  
you and your home.



Atlas 1 East Street, South Molton,  
Devon EX36 3BU

Telephone 01769 573730

Open 9.30 - 4.30pm Tuesday - Friday.  
Saturday till 4.00pm.

Find us on Instagram @shopatlas







# Tavistock



## PANNIER MARKET



**OPEN:**  
**TUESDAY-SATURDAY**  
**9AM-4PM**

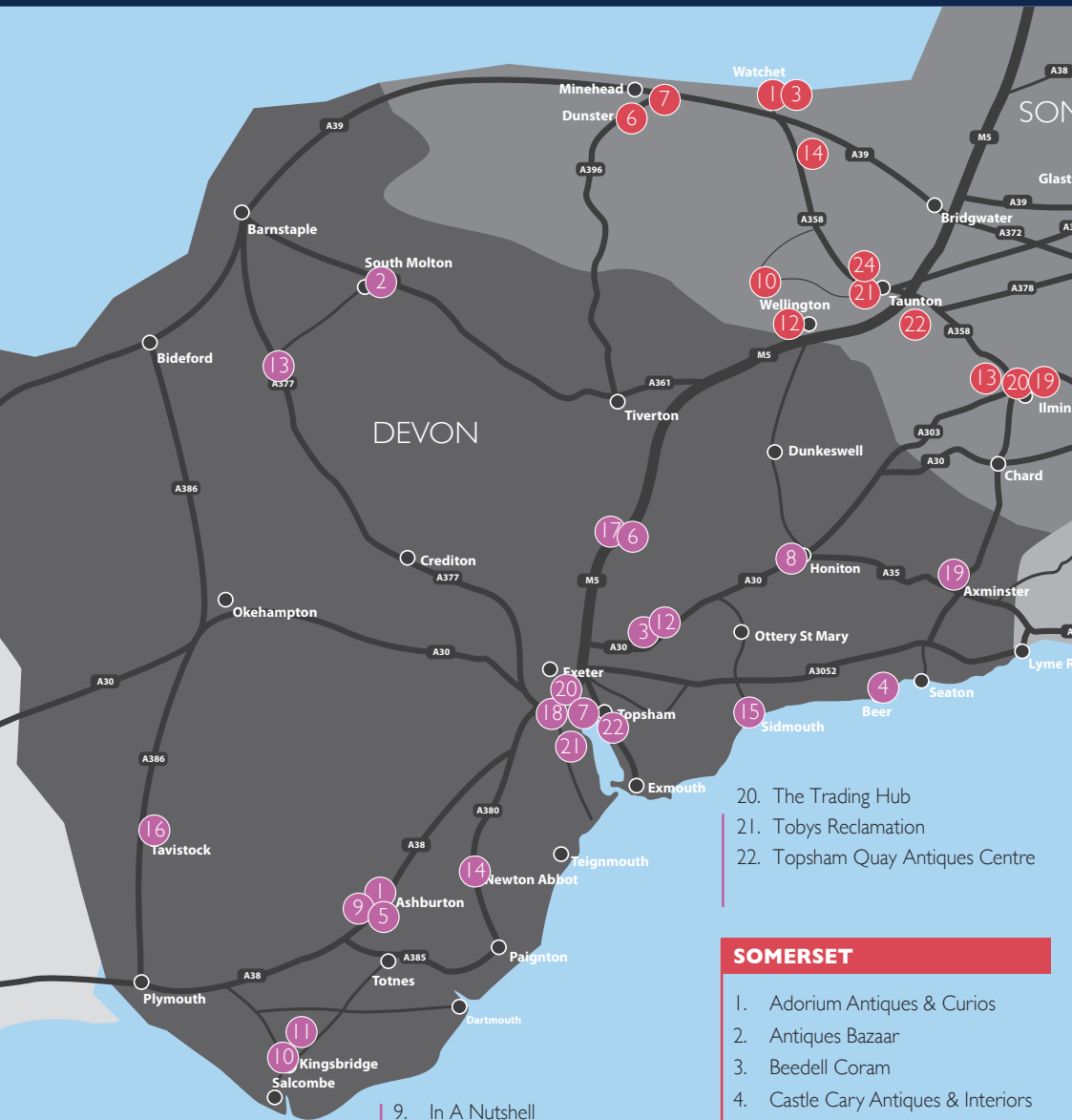
**Tuesdays - Antiques & Collectables**  
**Wednesday & Thursday**  
**- Crafts & Mixed Market**  
**Friday - Charter Market**  
**Saturday - Themed Markets**



Traders specialise in: Silver • Jewellery • Coins & Bank Notes • Medals  
 Stamps • Postcards • Military Uniforms • Artillery & Swords • Tools  
 Fishing Memorabilia • China Glass • Cutlery • Oriental Pottery  
 Antiquarian Books • Salvage • Old Bottles  
 General Antiques & Collectables

**For more information on our Markets & Events visit:**

**[WWW.TAVISTOCK.GOV.UK](http://WWW.TAVISTOCK.GOV.UK)**



**DEVON**

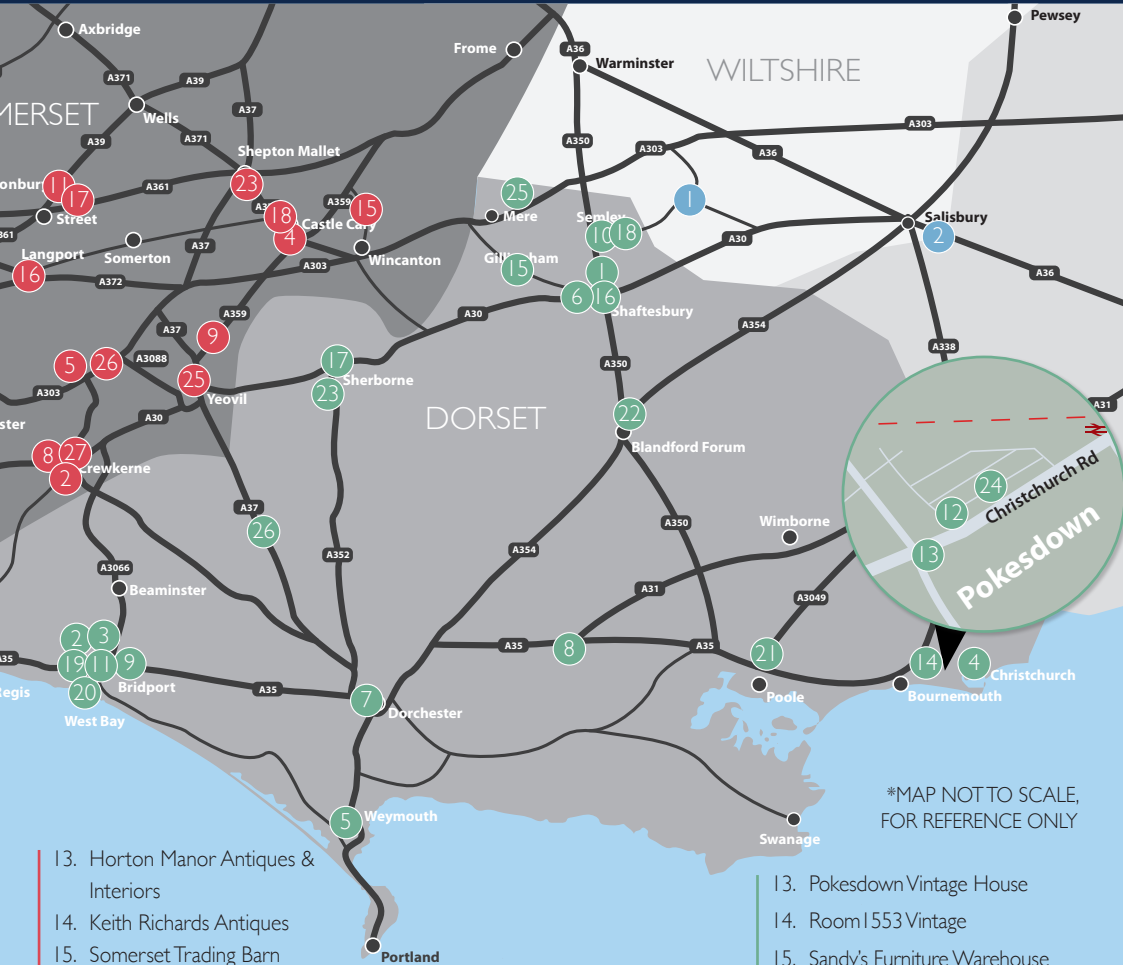
1. Ashburton Antiques Trail
2. Atlas Antiques
3. Carradale Farm Antiques Ltd
4. Dolphin Antiques Centre
5. East Street Antiques
6. Eclectic MIXteriors
7. Exeter's Antiques Centre
8. Fountain Antiques

9. In A Nutshell
10. Kingsbridge Antiques Centre
11. M & H Antiques & Art
12. McBains Antiques Centre
13. Murch's Antique Emporium
14. Newton Abbot Race Course
15. Sidmouth Antique Centre
16. Tavistock Pannier Market
17. The Antique Village Ltd
18. The Attic Antiques
19. The Old Chapel Antiques

20. The Trading Hub
21. Tobys Reclamation
22. Topsham Quay Antiques Centre

**SOMERSET**

1. Adorium Antiques & Curios
2. Antiques Bazaar
3. Beedell Coram
4. Castle Cary Antiques & Interiors
5. Castle Reclamation
6. Chatelaine Antiques
7. Chris's Crackers Junk Shop
8. Crewkerne Antiques Centre
9. Curious Cow Antiques & Reclamation
10. Fuller Stuff
11. Glastonbury Reclamation
12. Holywell Antiques & Licensed Tea Rooms



\*MAP NOT TO SCALE, FOR REFERENCE ONLY

- 13. Horton Manor Antiques & Interiors
- 14. Keith Richards Antiques
- 15. Somerset Trading Barn
- 16. Langport Vintage Market
- 17. Laura Lou Lou's
- 18. Loulabelle Does Vintage
- 19. No 57
- 20. Remains To Be Seen
- 21. Savoy Art Deco
- 22. Selwoods Antiques
- 23. Shepton Flea Market
- 24. Stuff 'N' Nonsense
- 25. The Emporium
- 26. Wessex Antique Bedsteads
- 27. Eleven Squared

**DORSET**

- 1. Bell Street Antiques
- 2. Bridport Vintage Market
- 3. Bridport's Historic Street Market
- 4. Christchurch Emporium
- 5. Cornucopia
- 6. Dairy House
- 7. Dorchester Curiosity Centre
- 8. Dorset Reclamation & Aga Exchange
- 9. Global Art & Antiques
- 10. Kingsettle Antiques
- 11. Pebble Vintage
- 12. Pokesdown Antiques Centre

- 13. Pokesdown Vintage House
- 14. Room 1553 Vintage
- 15. Sandy's Furniture Warehouse
- 16. Shaftesbury Antiques
- 17. Sherborne Antiques Market
- 18. Station Road Antiques
- 19. The Alleyways Centre
- 20. The Customs House
- 21. The Den
- 22. The Old Grainstore Emporium
- 23. The Old Yarn Mills
- 24. Vintage Mirrows & Lighting
- 25. Walton House Antiques Ltd
- 26. Wardon Hill Trading Post

**WILTSHIRE**

- 1. Heatons Of Tisbury
- 2. The Phoenix Emporium

**MOBILE SERVICES**

- Grandma's Attic



The Trading  
**Hub**  
 Industrial - Contemporary  
 Antiques - Vintage



@exetertradinghub

ONE DESTINATION FOR  
 Vintage-Contemporary-Antiques-Industrial-Garden-Reclamation

Located on the ground floor



FREE PARKING  
 DOGS WELCOME

'A treasure hunters delight.  
 So much to see you need  
 at least a whole day,  
 if not longer!  
 Great concept, Love it!  
 Customer review 2022

**HIDDEN**  
 COFFEE HOUSE

16 MARSH GREEN RD EAST,  
 MARSH BARTON  
 EXETER EX2 8PQ  
 01392 436919  
 exeterhub@outlook.com

Opening Hours:  
 Mon - Sat 10am-5pm  
 Sun - 10am-4pm



07960 543990

AT THE TRADING HUB  
MARSH BARTON EXETER EX2 8PQ  
AND  
THE ANTIQUE VILLAGE  
HELE EXETER EX5 4PW

## EAST STREET ANTIQUES

Mon - Sat 10am-5pm



8 East St, Ashburton,  
TQ13 7AA

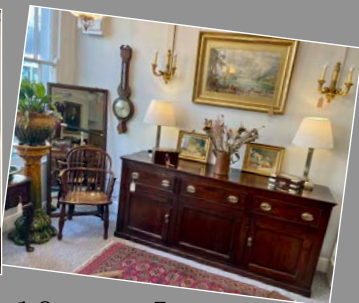


## In a Nutshell

• ANTIQUES & INTERIORS •

7 NORTH STREET, ASHBURTON TQ13 7QJ

Furniture - Lighting - Mirrors - Silver - Collectables - Glass



Open Monday - Saturday 10am - 5pm

Tel: 01364 654648 [www.inanutshellantiques.co.uk](http://www.inanutshellantiques.co.uk)



**NEWTON ABBOT**  
RACECOURSE & CONFERENCE CENTRE

**Antiques**  
*Collectables*  
**VINTAGE**  
**RETRO** *plus all kinds of*  
*Jewellery*  
**FAIR**

**Saturday 8th February 2025**  
**Saturday 29th March 2025**  
**Saturday 17th May 2025**  
**Saturday 7th June 2025**  
**with Classic Cars**  
**Saturday 13th September 2025**  
**Saturday 25th October 2025**  
**Saturday 15th November 2025**

**£1.00 pp**  
Early bird  
entry £5 pp  
at 8:15am

Pre booking to exhibit is essential  
[www.newtonabbotracing.com](http://www.newtonabbotracing.com)  
call us on 01626 353235

**Newton Abbot Racecourse** host regular Antiques Fairs. With 45 stalls inside and up to 25 outside (*weather depending*) it offers the buyer a great deal of choice in a wide variety of items from across many decades and indeed centuries.

Parking is free and there is a lovely café to purchase breakfast or lunch during your visit. There is easy access for wheelchair users and dogs are welcome but must remain on a lead.

To exhibit call Jenny or Jade on **01626 353235**  
*Pre booking essential.*

General public admission is £1 from 9.00am

Early bird admission £5 from 8.15am

Event runs until 2.30pm



**THEATTICANTIQUES.ENQUIRIES@GMAIL.COM**

*Call Us - 07545351314*



*The Attic  
Antiques*

**UNIT 10F, BAKERS YARD, ALPHINBROOK ROAD, EXETER, EX2 8RG**



★ ★ *You are invited to* ★ ★



**THE ATTIC ANTIQUES**

The Old Builders' Yard & Store  
**TOBYS**  
 Reclamation

Est. 1985



We Source Unique, Ethical & Fairly Priced  
 Pieces To Help You Create A  
 Beautiful Home & Garden.

01392 833499  
 sales@tobysreclamation.com  
 www.tobysreclamation.com

Station Road, Exminster, Devon, EX6 8DZ

**McBains**  
 ANTIQUES CENTRE  
*At the Antiques Complex*

EXETER AIRPORT, EXETER, DEVON EX5 2LL



**01392 366261**

mcbainantiques@gmail.com

Open: Monday to Friday 10am - 5pm  
 Saturday: 10am - 1pm Closed Bank Holidays

VISIT OUR WAREHOUSE FULL OF  
 "ANTIQUES FURNITURE" OR LOOK ONLINE

[www.antiquesobuy.co.uk/seller/mcbainantiques](http://www.antiquesobuy.co.uk/seller/mcbainantiques)

**Exeter's Antiques Centre**  
*and The Riverside Café*



Browse our eclectic mix of antiques & collectables  
 Enjoy a coffee, brunch, lunch or afternoon tea

Open every day 10am - 5pm

The Quay, Exeter. EX2 4AP



01392 493501 | [www.exeterquayantiques.co.uk](http://www.exeterquayantiques.co.uk)

**Topsham Quay**  
 Antiques Centre



**COME AND VISIT US!**

We are open 7 days a week  
 65 Dealers with thousands of antique & retro items  
 on 3 floors of a historic warehouse

**01392 874006**

The Quay, Topsham, Devon EX3 0JB

**Opening Hours:**

Winter 10:00 - 16:00

Summer 10:00 - 17:00 Sundays 11:00 - 17:00



[www.quayantiques.com](http://www.quayantiques.com)



# SIDMOUTH ANTIQUE CENTRE

*Established in 2007*

**OPEN MONDAY TO SATURDAY 10AM - 5PM**

Over 25 Dealers selling a wide range of Antique, Collectables & Vintage Items


An Aladdins Cave of Various Items:

Furniture • Silver • Militaria • Coins • Postcards • Toys  
Railwayana • Glass • Vinyl • Ephemera • Jewellery • China

*Browsers more than welcome...*

**Tel. 01395 512588**

Devonshire House All Saints Rd, Sidmouth  
EX10 8ES (Opposite the Post Office)

 @SidmouthAntiques

FREE LOCAL DELIVERY • WHEELCHAIR FRIENDLY

# DOLPHIN ANTIQUES CENTRE

**BEER, DEVON, Tel: 01297 24362**

An Aladdin's cave of affordable antique, vintage and collectable items  
situated in the picturesque fishing village of Beer



**OPEN EVERY DAY**

November - March 11:00am-3:00pm April - October 10:00am-4:00pm





## *The Old Chapel Antiques & Craft Centre*

Castle Street, Axminster, Devon EX13 5NP

Open: Monday - Friday 10am to 4pm  
Saturday 10am to 2pm

Now Hosting The Crafty Hobbit  
Local Artisan Arts & Crafts  
3 floors of Antiques & Crafts

Telephone: 01297 639995





Exeter Quay

# Fountain Antiques

30+ Dealers  
on 2 floors



132 High Street,

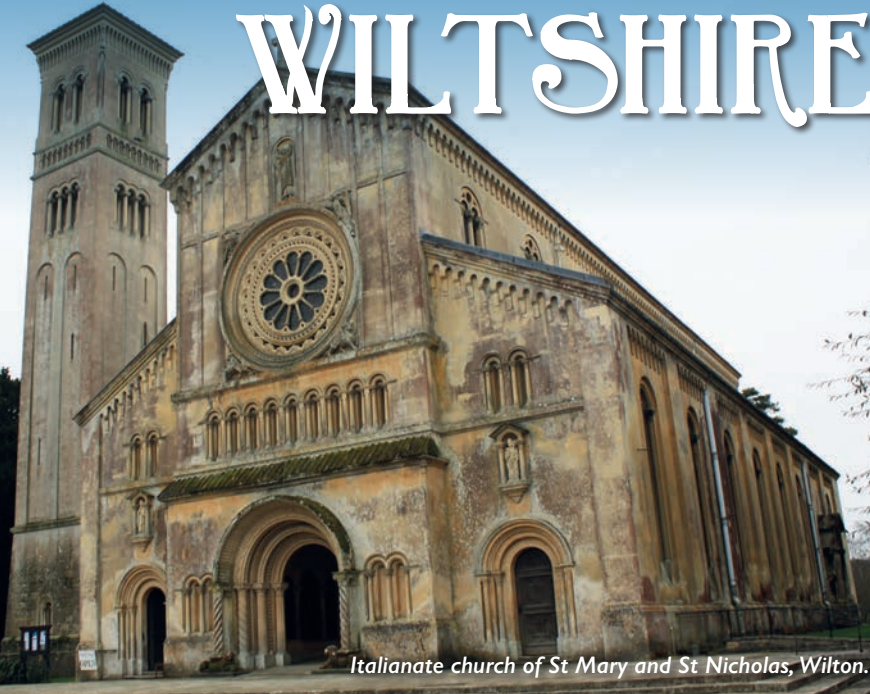
 Honiton, EX14 1JP. 

Tel: 01404 42074

A popular centre offering furniture, garden and farm tools, china, glass, clocks, militaria, textiles and lace, prints, paintings, jewellery, silver, lighting and much more.

**Open from 10am Monday  
to Saturday**

# WILTSHIRE



Italianate church of St Mary and St Nicholas, Wilton.

**WANT TO JOIN US NEXT YEAR?**



**NEXT TIME: 2026**  
HELLO@THEANTIQUESTOURIST.COM  
WWW.THEANTIQUESTOURIST.COM



**HEATONS**  
Antique Prints, Posters, Art  
[heatons-of-tisbury.co.uk](http://heatons-of-tisbury.co.uk)

2-3 High Street, Tisbury SP3 6PX  
Friday & Saturday or on request



# THE PHOENIX EMPORIUM

## RETRO, HAND-CRAFTED, COLLECTABLES



**THE PHOENIX EMPORIUM** in Salisbury is a hub for everything handpicked and handcrafted from the best local artisans and vendors. Spread over two floors in our spacious 11'000 sqft store, we are your destination shopping experience filled to the brim with unique and exciting goods from **over 125 local brands and small businesses**. From antiques to modern day collectables, hand-made and upcycled, vinyl records, books, clothing, jewellery and furniture; we have it all.

Don't forget to treat yourself to some of the delights on offer at the **Curio Coffeehouse**, boasting a mouth-watering selection of cakes **freshly baked on-site**, alongside hot snacks and other tasty treats, including both **vegan and gluten free options**. As well as an extensive range of coffees and teas, check our Specials Board in-store for our latest seasonal fare.



### FIND US AT:

115 Tollgate Road, Salisbury, SP1 2JG

☎ 01722 330589

- ✓ Open 7 days a week
- ✓ Customer toilets
- ✓ Plenty of free parking onsite
- ✓ Dog friendly

### OPENING HOURS:

Monday - Friday: 10.00am - 5.00pm  
 Saturday: 9.30am - 5.00pm  
 Sunday: 10.00am - 4.00pm

Stay up-to-date and follow us on



# SOMERSET



*Ham Hill, Somerset*



**BEEDELL CORAM**  
8 Swain Street  
Watchet  
TA23 0AB  
Antiques bought + sold  
call ahead :  
07981559601  
andrew.coram@btinternet.com

## Adorium Antiques and Curios

**Rare and unusual antique and curios sought**

in the Ancient Harbour town of  
Watchet at 10 Swain Street TA23 0AB

**Antiques • Vintage • Retro • Collectables**



**Valuations • Restorations • Repairs • Upholstery**

**Johnny 07557520138**

Open Wed - Sat 10 to 5pm  
or by appointment

**[www.visit-watchet.co.uk](http://www.visit-watchet.co.uk)**

# CHATELAINE ANTIQUES

14 West Street, Dunster, Somerset TA24 6SN



Open Wednesdays to Saturdays  
10.00am to 5.00pm

Always an interesting selection of reasonably priced  
traditional and unusual antiques ....

jillpwilliams1@gmail.com  
01643 821651

## HOLYWELL ANTIQUES & Licensed Tea Rooms

Holywell Lake, Wellington, Somerset TA21 0EJ  
Thursday - Saturday, + 1st Sunday of the month



OPENING SPRING 2025

Please see Facebook for updates of opening times

TELEPHONE: 01823 976551

JOHNSANTIQUES25@YAHOO.COM

*Chris's Crackers*

# The Best *Junk Shop* in the South West est 1994

Antiques \* Salvage \* Reclamation



*The South West's  
Leading  
Salvage Yard!*



Call **01643 821873** or **07890 322756**

Visit [www.chriscrackers.net](http://www.chriscrackers.net) or email [info@chriscrackers.net](mailto:info@chriscrackers.net)

The Junk Shop • Townsend Garage • Main Road • Carhampton • Minehead • Somerset • TA24 6NH

# FULLER STUFF

## SOMERSET'S SHED FULL OF FURNITURE

15,000 sq ft



### OPEN EVERY SATURDAY 9AM - 3PM

UNIT 4 DYERS FARM, FITZHEAD ROAD, MILVERTON TA4 1RG



# 07786 227231



# STUFF 'N' NONSENSE



OPEN THURSDAY - SUNDAY 10AM - 4PM

TEL 01823 426994 WHATSAPP 07711 884467



COURTLANDS TRADING ESTATE, SOMERSET, TAUNTON, TA2 6NS

# Keith Richards Antiques

Ceramics, Glass, Silver, Furniture, Fine Art,  
Arts & Crafts, Art Nouveau & Art Deco Specialist

Quality Antiques Bought and Sold



Tel: 07833 337051

Torweston Farm, Williton, Taunton. Somerset TA4 4LL

[www.keithrichardsantiques.co.uk](http://www.keithrichardsantiques.co.uk)

[enquiries@keithrichardsantiques.co.uk](mailto:enquiries@keithrichardsantiques.co.uk)



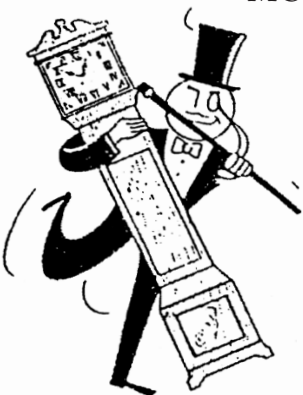
## SELWOODS ANTIQUE FURNITURE

Somerset's biggest selection.

MON TO SAT 10.00am - 3.30pm

Mary Street, Taunton,  
TA1 3PE

Tel: 01823 272780



Established  
1927

**WELL  
WORTH  
FINDING!**

Customer car  
park at rear



# SAVOY ART DECO

## EMPORIUM

ART DECO 1920'S/1930'S FURNITURE  
LIGHTING & COLLECTABLES  
ALL AT AFFORDABLE PRICES

*Step back in time to the age of glamour*

### OPENING TIMES

Fri - Sat 10am - 4pm | Sun 11am - 4pm

or by appointment only **07506 726652**

**Unit 8a, Courtlands Industrial Estate  
Norton Fitzwarren, Taunton TA2 6NS**

Now also at The Antiques Village, Hele, Devon EX5 4PW  
from Mon to Sat 10am to 4pm

 SavoyArtDecoCollectables



# N<sup>o</sup>.57

57 EAST STREET, ILMINSTER, SOMERSET TA19 0AW

**8 ROOMS OF ANTIQUES, VINTAGE  
- AND SECONDHAND BOOKS**

...and a great little cafe

Homemade cakes and lunches • Barista Coffee • Real fires



TEL: 01460 54856 CAFE 9.30-3 pm Monday to Friday ANTIQUES 10-3 pm Monday- Saturday

LIKE US ON: Facebook @No.57eaststreet & Instagram 57eaststreet

# HORTON MANOR

## ANTIQUES & INTERIORS



Phoenix Rising Antiques and Airs & Graces Decor in a beautiful new setting. Cafe, gift shop and parking on site



MONK'S YARD, HORTON CROSS, ILMINSTER TA19 9PY  
TUE - SAT 10am - 4pm 07768 182088 07746 707006

## REMAINS TO BE SEEN

ANTIQUES, VINTAGE  
& COLLECTABLES

Well established shop in the heart of  
Ilminster Market Town  
Buying & selling all types of Antiques,  
Collectables, Gold & Silver



WWW.REMAINSTOBESEEN.CO.UK  
Monday - Saturday 9:30am - 4:30pm

TEL: 01460 53028

24, EAST STREET, ILMINSTER,  
SOMERSET, TA19 0AJ

 Remains to be Seen

## Castle Reclamation



Main website  
[www.castlereclamation.com](http://www.castlereclamation.com)

Stock website  
[www.castlereclamation.uk](http://www.castlereclamation.uk)

Architectural Antiques

16th and 17th Century style Furniture

Replica Blue Lias, Purbeck  
and Hamstone Flagstones

Local Building Stone, Bricks, Roof Tiles

Natural local stone Cobbles and Flagstones

Parrett Works, Martock, Somerset, TA12 6AE

01935 826483

# THE EMPORIUM

ANTIQUES | INTERIORS | CAFE | GIFTS



85+ INDEPENDENT RETAILERS & ARTISANS

Visit our cafe for breakfast, lunch and afternoon tea

Monday - Saturday 9.30am - 4.30pm

39 Princes Street, Yeovil BA20 1EG | [www.theemporiumyeovil.co.uk](http://www.theemporiumyeovil.co.uk) | 01935 579482



## CURIOUS COW ANTIQUES & RECLAMATION

Just off the A359  
between Mudford  
& Marston Magna

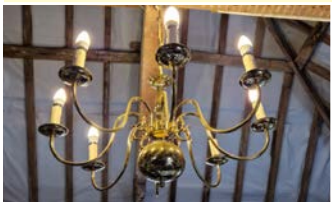
A warm  
welcome awaits

### ABOUT US

A newly opened, family run antiques, salvage and reclamation centre on the outskirts of Yeovil, Somerset. Come along and view our eclectic mix of items old & new, from antique furniture & porcelain to bespoke lighting and limited edition prints.

### WHAT WE DO

Specialists in Rural antiques, salvage & vintage items for the home & garden. Advisors on house clearance & reclamation/ upcycling Repairs & restorers of Antique & Vintage furniture, clocks, books and other items  
– *just ask us if we can help*



Opening times: Wed, Thur, Fri & Sat 10:00am - 16:00pm (other times by appointment)

Address: **The Curious Cow Antiques & Reclamation, Hinton Farm, Mudford, Yeovil, BA22 8BA**

Phone number: **07359 580872** Email: **info@curiouscowantiques.co.uk**

Website: **www.curiouscowantiques.co.uk**



## LANGPORT VINTAGE MARKET

Since 2017

Second Saturday Monthly

March - December

10am-4pm

Cockle Moor Car Park

Whatley, Langport, TA10 9RA

[www.langportvintagemarket.co.uk](http://www.langportvintagemarket.co.uk)

### Kim Woods Vintage

Vintage Quarter, The Undercroft,  
Langport, TA10 9PR

Thursdays, Fridays and Saturday 10-4pm

[www.etsy.com/uk/shop/kimwoodsVintage](http://www.etsy.com/uk/shop/kimwoodsVintage)



# The Giant SHEPTON FLEA Market

BATH & WEST SHOWGROUND  
SHEPTON MALLET, SOMERSET, BA4 6QN

## SUNDAYS 2025

March 2nd

April 20th

July 6th

August 17th

October 5th

December 7th

**BOOKING & ENQUIRIES**

**01278 784912**

[www.sheptonflea.com](http://www.sheptonflea.com)

[info@sheptonflea.com](mailto:info@sheptonflea.com)



**PUBLIC ADMISSION**

9.30AM – 4.00PM

Admission £6.00 FREE PARKING

## LAURA LOU LOU'S


Vintage & Retro Boutique


16 Benedict Street Glastonbury BA6 9EX



### Ladies & Gents Vintage Clothing

Tel: 07968 653594 [Lauraloulousvintageandretro.co.uk](http://Lauraloulousvintageandretro.co.uk)

 @lauraloulousvintage

 @lauraloulou's

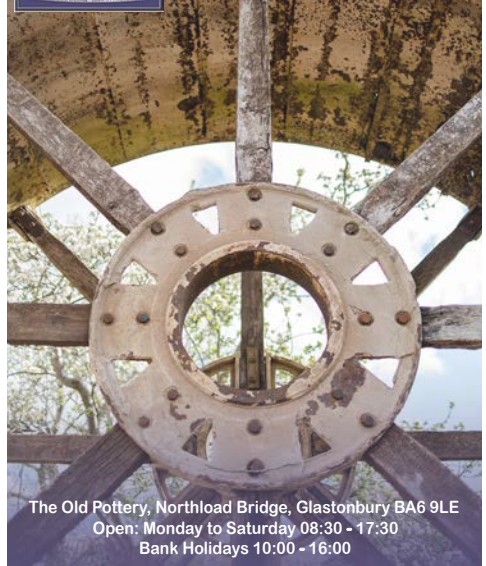


[www.glastonburyreclamation.co.uk](http://www.glastonburyreclamation.co.uk)

find us on facebook and twitter

01458 831122

[info@glastonburyreclamation.co.uk](mailto:info@glastonburyreclamation.co.uk)



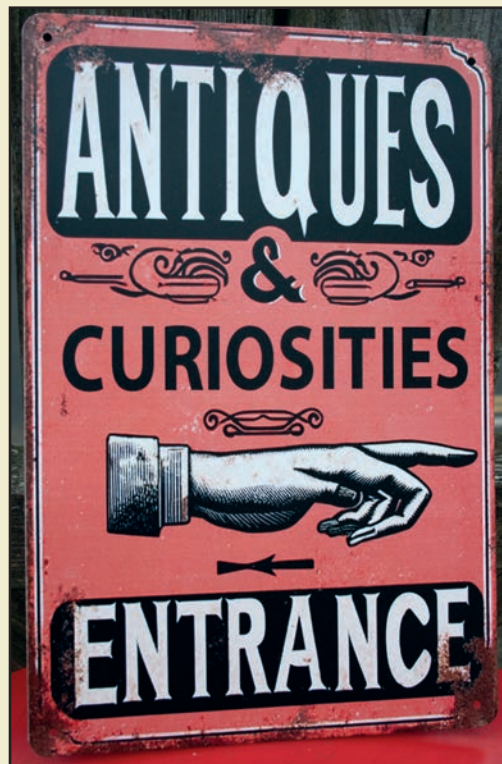
The Old Pottery, Northload Bridge, Glastonbury BA6 9LE

Open: Monday to Saturday 08:30 - 17:30

Bank Holidays 10:00 - 16:00


# Antiques Bazaar

A Great Centre for Antiques and Curiosities  
**TRADING 7 DAYS A WEEK**



The Old Textile Mill, South Street, Crewkerne. TA18 8AG

**Tel: 01460 77121**

 @AntiquesBazaars

[www.antiquesbazaar.co.uk](http://www.antiquesbazaar.co.uk)

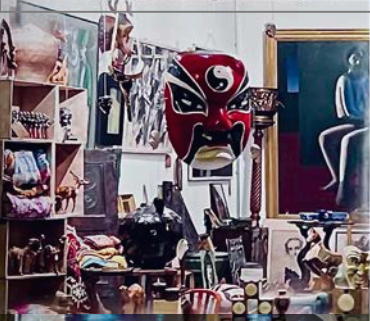
# ELEVEN SQUARED

11 Market SQ Crewkerne  
Somerset TA18 7LE  
Call Chaz on-07855387843  
elevensquaredsomerset.co.uk

# 11<sup>2</sup>



"A veritable cabinet of curiosities"



Antiques. Interiors- pieces. Sculpture.  
Paintings. Etchings. Engravings. Prints.  
Artbooks.  
Restoration. Framing. Tiny Coffee shop  
coming soon.

Friends of <sup>2</sup>11 evening events.  
Feel free to come in, chat, and browse.



OPEN, WED-SAT OR BY APPOINTMENT  
Curating the curious and unusual, sourcing  
the rare and the beautiful. Decorative-  
pieces, Antiques and Objet d'art

# WESSEX ANTIQUE BEDSTEADS

Percombe (A303), Stoke Sub Hamdon, Somerset TA14 6RD



At Wessex Antique Bedsteads you will find one of the largest and most varied collections of Brass, Iron and Wooden Bedsteads in the UK from the Victorian and Edwardian eras with always more than over 3000 bedsteads in stock. As well as an eclectic mix of over 5,000 items of furniture.



We are able to offer quality made to measure, mattresses and bases in any shape or size and also offer a full restoration service.



Email: [info@wessexbeds.co.uk](mailto:info@wessexbeds.co.uk)

Tel: 01935 829147 [www.wessexbeds.co.uk](http://www.wessexbeds.co.uk)

We look forward to seeing you soon... Nationwide delivery & worldwide shipping



## CREWKERNE ANTIQUES CENTRE

for more information  
call 01460 77111



**Antiques, Decorative, Silverware, Jewellery, Vintage Vinyl,  
Furniture, Country Pine, Ceramics & Gardenalia**

[crewkerneantiques@yahoo.com](mailto:crewkerneantiques@yahoo.com) | [www.crewkerneantiques.co.uk](http://www.crewkerneantiques.co.uk)

**Find us: 16 Market St, Crewkerne TA18 7LA**

We are open: Monday - Saturday, 10.00am - 4.30pm





**SOMERSET TRADING BARN**

**KIMBERS' FARM SHOP**

Sprout the Flower Vintage

24 individual traders of 2 floors, antiques, collectibles, curios, fabrics, upcycled. Stock changes daily so well worth a regular browse.

Farming the same land for over 300 years. Home produced meats, bespoke butchery, a celebration of the West country!

**KIMBERS' FARM SHOP**

Bistro style food, Breakfast, Lunch and cakes. Pop up events and private functions. Welcoming, friendly, using local sustainable produce.

**Simple, Honest, Delicious.**

**THE KITCHEN**

[www.thekitchenatkimbers.co.uk](http://www.thekitchenatkimbers.co.uk)

Linley Farm | Charlton Musgrove | Wincanton | Somerset | BA9 8HD  
 01963 33177 | [www.kimberfarmshop.co.uk](http://www.kimberfarmshop.co.uk)



**LOULABELLE  
DOES VINTAGE**

True handpicked  
vintage fashion  
& accessories

High Quality  
pre-owned  
collections  
for sale  
on commission




07526 776778 07920 815575  
 @loulabelledoesvintage  
 hello@loulabelledoesvintage.co.uk  
 3 High Street, Castle Cary BA7 7AN

**ALWAYS  
FREE**


*The Antiques*  
**TOURIST**

DORSET | DEVON | WILTSHIRE | SOMERSET

**2025  
 EDITION**

**YOUR ESSENTIAL  
 GUIDE TO:**

ANTIQUES  
 VINTAGE  
 RETRO  
 RECLAMATION



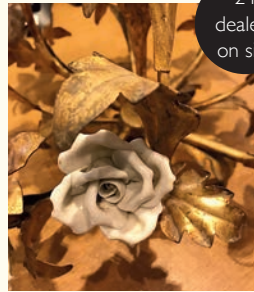
The Antiques Tourist is promoted by Antiques Bazaar  
 THE OLD TEXTILE MILL | SOUTH STREET | CREWKERNE | TA18 8AG  
 Telephone: 01460 77121

[WWW.THEANTIQUESTOURIST.COM](http://WWW.THEANTIQUESTOURIST.COM)

**NEED MORE COPIES TO DISPLAY?  
 FOR MORE INFORMATION VISIT  
 WWW.THEANTIQUESTOURIST.COM**

# Castle Cary Antiques & Interiors


Situated in the heart of the town, Castle Cary Antiques & Interiors is a quirky sixteenth-century building and a haven for a large number of experienced antique dealers. Courtyard Gardenalia is among the many treasures you'll discover here, alongside quality antiques sourced worldwide.



24  
 dealers  
 on site

**Tel: 01963 351014** Monday - Saturday: 10am - 5pm

2 Market Place, Castle Cary, Somerset BA7 7AL

 [castle\\_cary\\_antiques](https://www.instagram.com/castle_cary_antiques)



# ASHBURTON ANTIQUES TRAIL

*With over 10 individual antique shops showcasing some of the South West's best dealers, Ashburton is a must visit!*



Devon's destination town for antiques - just off the A38 only  
30 minutes from Plymouth or Exeter

Sat-Nav : TQ13 7QJ

Tel : 07800561203

[www.ashburtonantiquetrail.co.uk](http://www.ashburtonantiquetrail.co.uk)





# CARRADALE FARM ANTIQUES LTD

“SIMPLY UNMISSABLE!”

The Antiques Complex - EX5 2LL

Adjacent to Exeter Airport (Next to McBains).

Tel: 01392 447082

Mobile: 07967 447082

Email: [jontredant@aol.com](mailto:jontredant@aol.com)

[www.carradalefarmantiquesltd.com](http://www.carradalefarmantiquesltd.com)